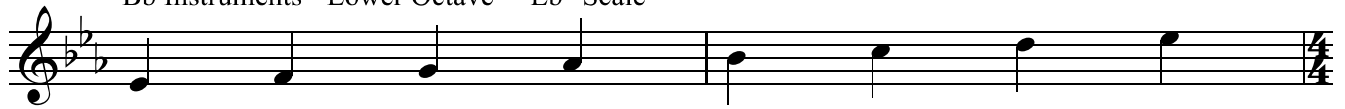


Db SIGHT-READING + RHYTHM EXERCISES

Level 1

Bb Instruments - Lower Octave - "Eb" Scale



All of the following exercises utilize notes from the key of "Db"

The dotted quarter note is worth 1 1/2 beats.

The first number is written below the note and the next number above the note.

In all of these exercises, the dotted quarter will be followed by a single eighth note.

This is worth 1/2 a beat and should be labeled with a "+" sign below the note.

The dotted quarter rest is equivalent in value to a dotted half note. (1.5 beats)

When writing in the counts, you would write the 2 numbers for the rest ABOVE the rest.

There are no dotted quarter rests on this sheet.

3 A 2 4 2 4

A musical staff in 4/4 time, key of Eb. The notes are: Eb, E, F, F#, G, Ab, A, Bb, B, C, C#, D, Eb. Fingerings are written above the notes: 2, 4, 2, 4. Counts are written below the notes: 1 + 3, 1 + 3. The staff ends with a double bar line and a 4/4 time signature.

1 + 3 1 + 3

7

A musical staff in 4/4 time, key of Eb. The notes are: Eb, E, F, F#, G, Ab, A, Bb, B, C, C#, D, Eb. The staff ends with a double bar line and a 4/4 time signature.

11 B

A musical staff in 4/4 time, key of Eb. The notes are: Eb, E, F, F#, G, Ab, A, Bb, B, C, C#, D, Eb. The staff ends with a double bar line and a 4/4 time signature.

15

A musical staff in 4/4 time, key of Eb. The notes are: Eb, E, F, F#, G, Ab, A, Bb, B, C, C#, D, Eb. The staff ends with a double bar line and a 4/4 time signature.

